

Piccolo



Fly Me to The Moon

Music by Bart Howard
Arr. by T. Utsunomiya

Medium Swing ♩ = 132

Musical notation for the first staff, starting with a *ff* dynamic marking.

Musical notation for the second staff.

Musical notation for the third staff, marked with a box 'A' and a fermata of 8 measures.

Musical notation for the fourth staff, marked with a box 'B' and a *mp* dynamic marking.

Musical notation for the fifth staff.

Musical notation for the sixth staff, marked with a box 'C' and a *ff* dynamic marking.

Musical notation for the seventh staff.

Musical notation for the eighth staff, marked with a box 'E' and a fermata of 8 measures.

TANARAZUNA CITY ACADEMY BAND

Musical notation for the first staff on the right, marked with a box 'F' and a *mp* dynamic marking.

Musical notation for the second staff on the right.

Musical notation for the third staff on the right, marked with a box 'G' and a fermata of 8 measures.

Musical notation for the fourth staff on the right, marked with a box 'H' and a *f* dynamic marking.

Musical notation for the fifth staff on the right, marked with a box 'J' and a *mf* dynamic marking.

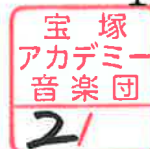
Musical notation for the sixth staff on the right.

Musical notation for the seventh staff on the right, marked with a box 'K' and a *ff* dynamic marking.

Musical notation for the eighth staff on the right, marked with a box 'L'.

Musical notation for the ninth staff on the right, marked with a *f* dynamic marking.

1st Flute



Fly Me to The Moon

Music by Bart Howard
Arr. by T. Utsunomiya

Medium Swing ♩ = 132

Musical staff with notes and dynamics including *ff*.

Musical staff with notes and dynamics including *ff*.

Musical staff with a whole rest and a fermata, labeled **A**.

Musical staff with notes and dynamics including *mp*, labeled **B**.

Musical staff with notes and dynamics including *mp*.

Musical staff with notes and dynamics including *ff*, labeled **C** and **D**.

Musical staff with notes and dynamics including *ff*.

Musical staff with a whole rest and a fermata, labeled **E**.

Musical staff with notes and dynamics including *mp*, labeled **F**.

Musical staff with notes and dynamics including *mp*.

Musical staff with a whole rest and a fermata, labeled **G**.

Musical staff with notes and dynamics including *f*, labeled **H** and **I**.

Musical staff with notes and dynamics including *mf*, labeled **J**.

Musical staff with notes and dynamics including *mf*.

Musical staff with notes and dynamics including *ff*, labeled **K**.

Musical staff with notes and dynamics including *ff*, labeled **L**.

Musical staff with notes and dynamics including *f* and *mf*.



2nd Flute

Fly Me to The Moon

Medium Swing ♩ = 132

Music by Bart Howard
Arr. by T. Utsumomiya

Musical notation for the first staff, starting with a *ff* dynamic marking.

Musical notation for the second staff.

Musical notation for the third staff, marked with a box 'A' and an 8-measure rest.

Musical notation for the fourth staff, marked with a box 'B' and a *mp* dynamic marking.

Musical notation for the fifth staff.

Musical notation for the sixth staff, marked with a box 'C', a 7-measure rest, and a *ff* dynamic marking.

Musical notation for the seventh staff, marked with a box 'D'.

Musical notation for the eighth staff.

Musical notation for the ninth staff, marked with a box 'E', a 2-measure rest, and an 8-measure rest.

Musical notation for the tenth staff, marked with a box 'F' and a *mp* dynamic marking.

Musical notation for the eleventh staff.

Musical notation for the twelfth staff, marked with a box 'G' and an 8-measure rest.

Musical notation for the thirteenth staff, marked with a box 'H', a 7-measure rest, a *f* dynamic marking, and a triplet.

Musical notation for the fourteenth staff, marked with a box 'J', a 6-measure rest, and a *mf* dynamic marking.

Musical notation for the fifteenth staff.

Musical notation for the sixteenth staff, marked with a box 'K', a 7-measure rest, and a *ff* dynamic marking.

Musical notation for the seventeenth staff, marked with a box 'L'.

Musical notation for the eighteenth staff, ending with *f* and *mf* dynamic markings.

Oboe

Fly Me to The Moon

Music by Bart Howard
Arr. by T. Utsunomiya



Medium Swing ♩ = 132

Musical staff with notes and dynamics *ff*

Musical staff with notes and dynamics *ff*

Musical staff with measure rest 8 and dynamic *ff*

Musical staff with measure rest 8 and dynamic *mp*

Musical staff with measure rest 8 and dynamic *mp*

Musical staff with measure rest 7, dynamic *ff*, and section marker **D**

Musical staff with notes and dynamics *ff*

Musical staff with measure rest 2, section marker **E**, and measure rest 8

Musical staff with section marker **F** and dynamic *mp*

Musical staff with section marker **F** and dynamic *mp*

Musical staff with section marker **G** and measure rest 8

Musical staff with section marker **H**, measure rest 7, dynamic *f*, and section marker **I**

Musical staff with section marker **J**, measure rest 6, and dynamic *mf*

Musical staff with notes and dynamics *mf*

Musical staff with section marker **K**, measure rest 7, and dynamic *ff*

Musical staff with section marker **L** and notes

Musical staff with notes and dynamics *f* and *mf*

Bassoon



Fly Me to The Moon

Music by Bart Howard
Arr. by T. Utsumomiya

5 / Medium Swing ♩ = 132

Musical staff with bass clef, key signature of two flats, and 4/4 time signature. It begins with a rest followed by a quarter note, then a series of eighth notes, and ends with a quarter note. Dynamics include *ff*.

Musical staff with bass clef, key signature of two flats, and 4/4 time signature. It starts with eighth notes, followed by a half note with an accent, and ends with a quarter note.

Musical staff with bass clef, key signature of two flats, and 4/4 time signature. It contains an 8-measure rest.

Musical staff with bass clef, key signature of two flats, and 4/4 time signature. It contains an 8-measure rest. Dynamics include *mp*.

Musical staff with bass clef, key signature of two flats, and 4/4 time signature. It contains an 8-measure rest.

Musical staff with bass clef, key signature of two flats, and 4/4 time signature. It features a 7-measure rest, followed by a quarter note, then eighth notes. Dynamics include *ff*.

Musical staff with bass clef, key signature of two flats, and 4/4 time signature. It starts with a half note, followed by eighth notes, and ends with a quarter note with an accent.

Musical staff with bass clef, key signature of two flats, and 4/4 time signature. It contains a 2-measure rest, followed by an 8-measure rest.

Musical staff with bass clef, key signature of two flats, and 4/4 time signature. It contains an 8-measure rest. Dynamics include *mp*.

Musical staff with bass clef, key signature of two flats, and 4/4 time signature. It contains an 8-measure rest.

Musical staff with bass clef, key signature of two flats, and 4/4 time signature. It contains an 8-measure rest.

Musical staff with bass clef, key signature of two flats, and 4/4 time signature. It features a 7-measure rest, followed by eighth notes with triplets. Dynamics include *f*.

Musical staff with bass clef, key signature of two flats, and 4/4 time signature. It features a 6-measure rest, followed by eighth notes. Dynamics include *mf*.

Musical staff with bass clef, key signature of two flats, and 4/4 time signature. It contains eighth notes and rests.

Musical staff with bass clef, key signature of two flats, and 4/4 time signature. It features a 7-measure rest, followed by eighth notes. Dynamics include *ff*.

Musical staff with bass clef, key signature of two flats, and 4/4 time signature. It contains eighth notes and rests.

Musical staff with bass clef, key signature of two flats, and 4/4 time signature. It contains eighth notes, a half note with an accent, and eighth notes. Dynamics include *f* and *mf*.

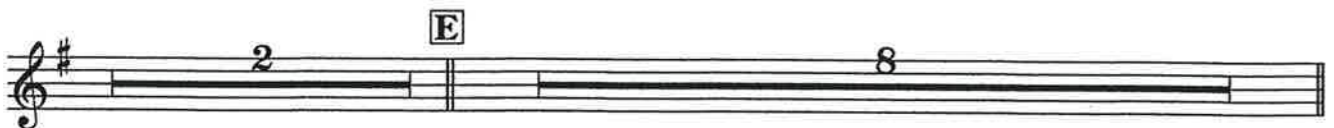
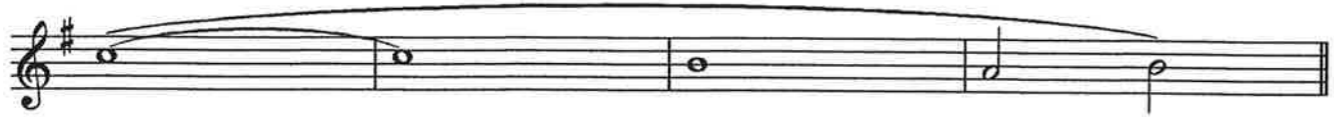
E \flat Clarinet in E \flat



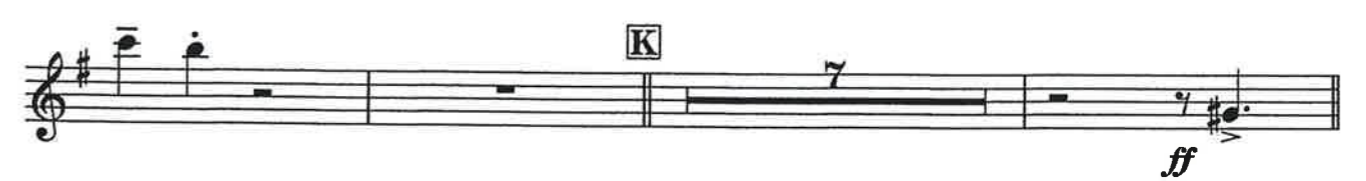
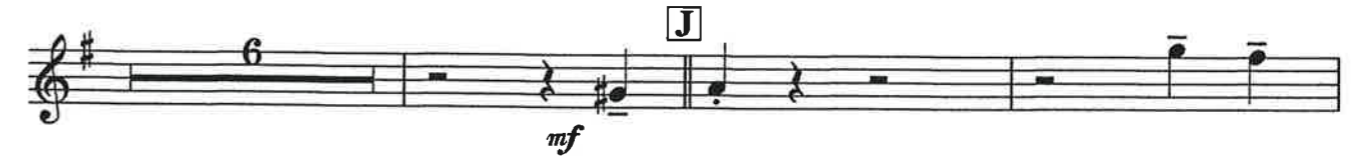
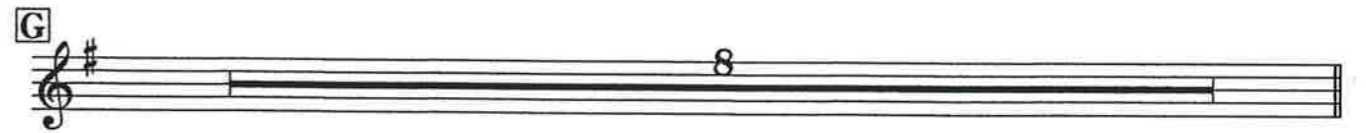
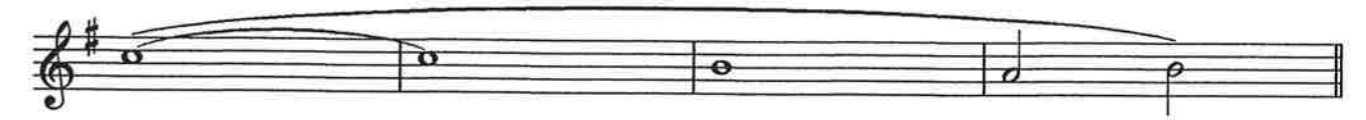
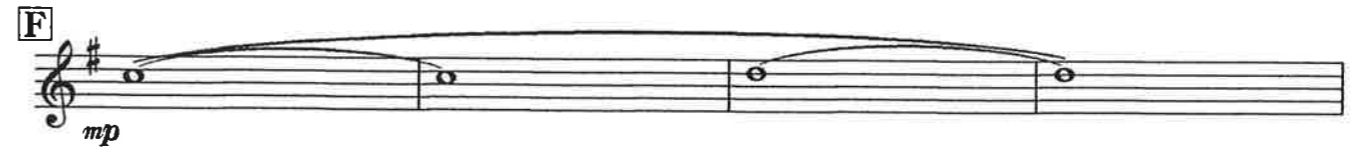
Fly Me to The Moon

Music by Bart Howard
Arr. by T. Utsunomiya

Medium Swing ♩ = 132



TANABAZUNA CITY ACADEMY BAND



1st Clarinet in B \flat



Fly Me to The Moon

Music by Bart Howard
Arr. by T. Utsunomiya

Medium Swing ♩ = 132

Musical notation for the first staff, starting with a *ff* dynamic marking.

Musical notation for the second staff.

Musical notation for the third staff, labeled with a boxed 'A' and an 8-measure rest.

Musical notation for the fourth staff, labeled with a boxed 'B' and a *mp* dynamic marking.

Musical notation for the fifth staff.

Musical notation for the sixth staff, labeled with boxed 'C' and 'D', and a *ff* dynamic marking.

Musical notation for the seventh staff.

Musical notation for the eighth staff, labeled with a boxed 'E' and an 8-measure rest.

TANARAZUNA CITY ACADEMY BAND

宝塚市アカデミー音楽団

Musical notation for the first staff on the right, labeled with a boxed 'F' and a *mp* dynamic marking.

Musical notation for the second staff on the right.

Musical notation for the third staff on the right, labeled with a boxed 'G' and an 8-measure rest.

Musical notation for the fourth staff on the right, labeled with a boxed 'H', a *f* dynamic marking, and a triplet.

Musical notation for the fifth staff on the right, labeled with a boxed 'J' and a *mf* dynamic marking.

Musical notation for the sixth staff on the right.

Musical notation for the seventh staff on the right, labeled with a boxed 'K' and a *ff* dynamic marking.

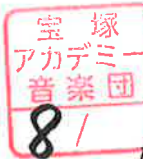
Musical notation for the eighth staff on the right, labeled with a boxed 'L'.

Musical notation for the ninth staff on the right, with *f* and *mf* dynamic markings.

2nd Clarinet in B \flat

Fly Me to The Moon

Music by Bart Howard
Arr. by T. Utsumomiya



Medium Swing ♩ = 132

Musical staff with notes and dynamics: *ff*

Musical staff with notes and dynamics: *p*

Musical staff with a whole rest and dynamic: 8

Musical staff with notes and dynamics: *mp*

Musical staff with notes and dynamics: *mf*

Musical staff with notes and dynamics: *ff*

Musical staff with notes and dynamics: *p*

Musical staff with rests and dynamics: 2, 8

TABARAZUNA CITY ACADEMY BAND

Musical staff with notes and dynamics: *mp*

Musical staff with notes and dynamics: *mf*

Musical staff with a whole rest and dynamic: 8

Musical staff with notes, rests, and dynamics: *f*, 7, 3, 3

Musical staff with notes, rests, and dynamics: *mf*, 6

Musical staff with notes and dynamics: *mf*

Musical staff with notes, rests, and dynamics: *ff*, 7

Musical staff with notes and dynamics: *p*

Musical staff with notes and dynamics: *f*, *mf*

3rd Clarinet in B \flat

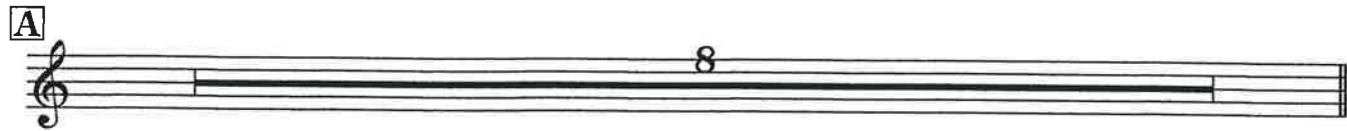
宝塚
アカデミー
音楽団

9/

Medium Swing $\bullet = 132$

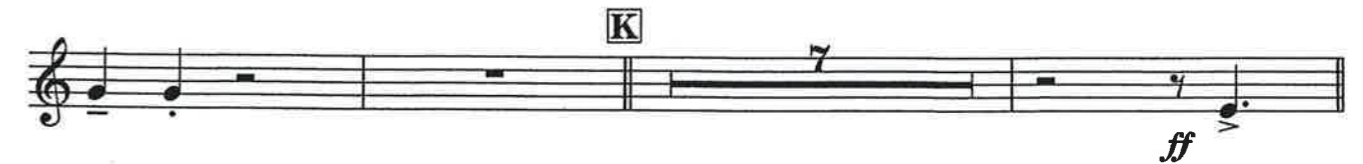
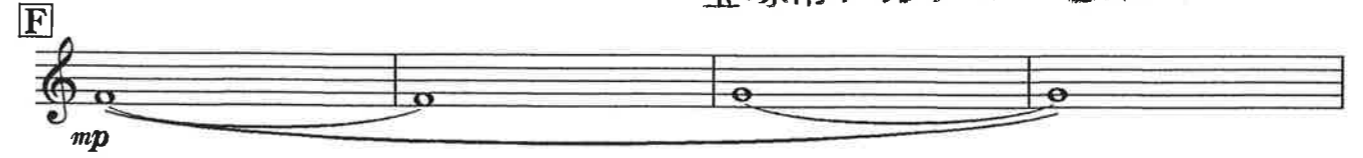
Fly Me to The Moon

Music by Bart Howard
Arr. by T. Utsunomiya



tamarazuna city academy band

宝塚市アカデミー音楽団



Alto Clarinet in E \flat



Fly Me to The Moon

Music by Bart Howard
Arr. by T. Utsumiya

Medium Swing $\text{♩} = 132$

Musical staff with treble clef, key signature of one sharp (F#), and common time. It begins with a *ff* dynamic marking and contains several eighth and quarter notes.

Musical staff with treble clef, key signature of one sharp, and common time. It features a series of eighth notes followed by a quarter note and a half note.

Musical staff with treble clef, key signature of one sharp, and common time. It contains an 8-measure rest.

Musical staff with treble clef, key signature of one sharp, and common time. It begins with a *mp* dynamic marking and contains a long 8-measure rest.

Musical staff with treble clef, key signature of one sharp, and common time. It contains a long 8-measure rest.

Musical staff with treble clef, key signature of one sharp, and common time. It contains a 7-measure rest, followed by a *ff* dynamic marking and a quarter note.

Musical staff with treble clef, key signature of one sharp, and common time. It contains a half note, a quarter note, and a quarter note.

Musical staff with treble clef, key signature of one sharp, and common time. It contains a 2-measure rest, followed by an 8-measure rest.

TANARAZUNA CITY ACADEMY BAND

Musical staff with treble clef, key signature of one sharp, and common time. It begins with a *mp* dynamic marking and contains a long 8-measure rest.

Musical staff with treble clef, key signature of one sharp, and common time. It contains a long 8-measure rest.

Musical staff with treble clef, key signature of one sharp, and common time. It contains an 8-measure rest.

Musical staff with treble clef, key signature of one sharp, and common time. It contains a 7-measure rest, followed by a *f* dynamic marking, a triplet of eighth notes, and a quarter note.

Musical staff with treble clef, key signature of one sharp, and common time. It contains a 6-measure rest, followed by a *mf* dynamic marking and a quarter note.

Musical staff with treble clef, key signature of one sharp, and common time. It contains a quarter note, a quarter note, and a quarter note.

Musical staff with treble clef, key signature of one sharp, and common time. It contains a 7-measure rest, followed by a *ff* dynamic marking and a quarter note.

Musical staff with treble clef, key signature of one sharp, and common time. It contains a quarter note, a quarter note, and a quarter note.

Musical staff with treble clef, key signature of one sharp, and common time. It contains a quarter note, a quarter note, and a quarter note.

Bass Clarinet in B \flat

Fly Me to The Moon

Music by Bart Howard
Arr. by T. Utsunomiya

Medium Swing ♩ = 132



Musical staff with dynamics *ff* and a fermata.

Musical staff with a fermata.

Musical staff with a fermata labeled **A** and a duration of 8.

Musical staff with dynamics *mp* and a fermata.

Musical staff with a fermata.

Musical staff with dynamics *ff*, a fermata labeled **C** with a duration of 7, and a fermata labeled **D**.

Musical staff with a fermata.

Musical staff with a fermata labeled **E**, a duration of 2, and a duration of 8.

takarazuka city academy band

Musical staff with dynamics *mp* and a fermata labeled **F**.

Musical staff with a fermata.

Musical staff with a fermata labeled **G** and a duration of 8.

Musical staff with dynamics *f*, a fermata labeled **H** with a duration of 7, a triplet of eighth notes, and a fermata labeled **I**.

Musical staff with dynamics *mf*, a fermata labeled **J** with a duration of 6, and a fermata.

Musical staff with a fermata.

Musical staff with dynamics *ff*, a fermata labeled **K** with a duration of 7, and a fermata.

Musical staff with a fermata labeled **L**.

Musical staff with dynamics *f* and *mf*, and a fermata.

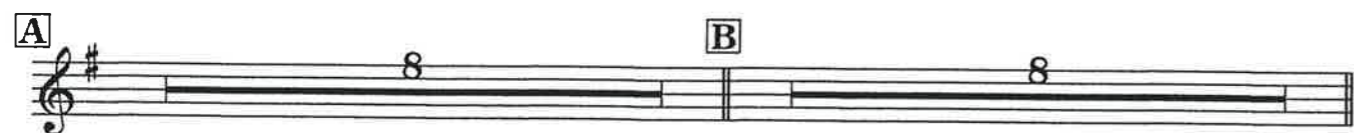
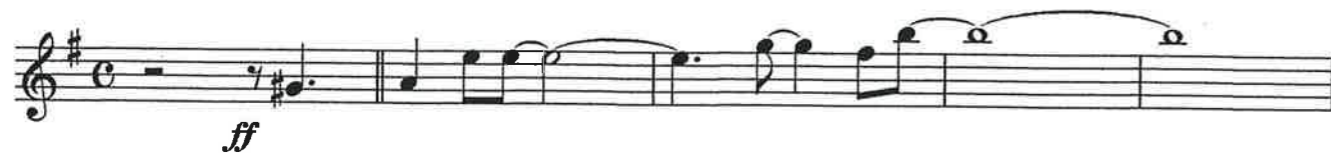
宝塚
アカデミー
音楽団
12

1st Alto Sax. in E^b

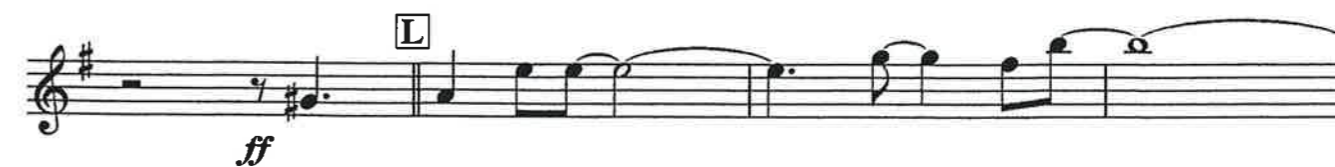
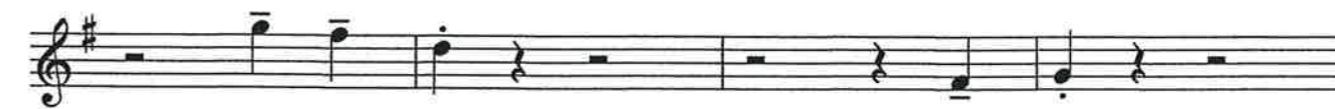
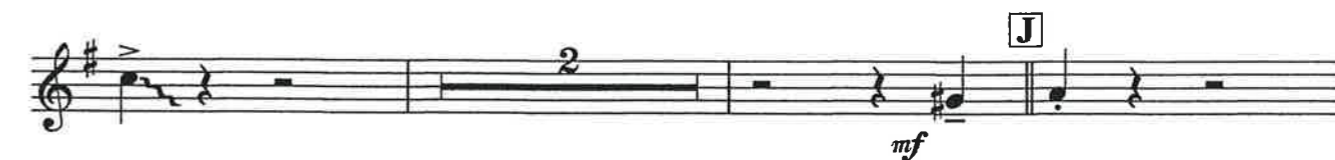
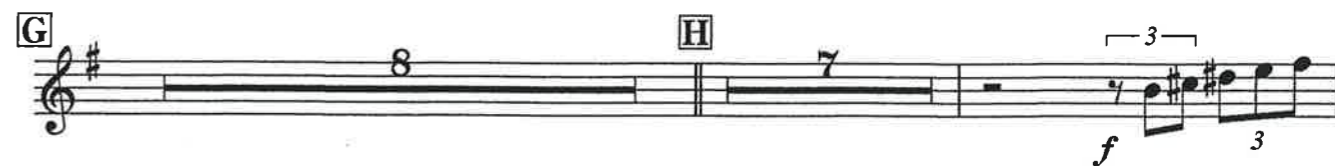
Fly Me to The Moon

Music by Bart Howard
Arr. by T.Utsunomiya

Medium Swing ♩ = 132



TANARAZUNA CITY ACADEMY BAND



2nd Alto Sax. E \flat

Fly Me to The Moon

Music by Bart Howard
Arr. by T. Utsunomiya

Medium Swing $\bullet = 132$



Musical staff with treble clef, key signature of one sharp (F#), and common time. It begins with a *ff* dynamic marking and features a melodic line with a slur and a flat accidental (b) on the final note.

Musical staff with treble clef, key signature of one sharp (F#), and common time. It continues the melodic line with various rhythmic patterns and slurs.

Musical staff with treble clef, key signature of one sharp (F#), and common time. It contains two measures of whole notes, each marked with an '8' above the staff, labeled 'A' and 'B' respectively.

Musical staff with treble clef, key signature of one sharp (F#), and common time. It starts with a *f* dynamic marking and features a melodic line with slurs.

Musical staff with treble clef, key signature of one sharp (F#), and common time. It continues the melodic line, ending with a *ff* dynamic marking and a slur.

Musical staff with treble clef, key signature of one sharp (F#), and common time. It features a melodic line with a slur and a flat accidental (b) on the final note.

Musical staff with treble clef, key signature of one sharp (F#), and common time. It contains two measures of whole notes, each marked with a '2' above the staff.

Musical staff with treble clef, key signature of one sharp (F#), and common time. It contains two measures of whole notes, each marked with an '8' above the staff, labeled 'E' and 'F' respectively.

Musical staff with treble clef, key signature of one sharp (F#), and common time. It contains two measures of whole notes, each marked with an '8' above the staff, labeled 'G' and 'H' respectively. The second measure includes a triplet of eighth notes marked with a '3' above and below.

Musical staff with treble clef, key signature of one sharp (F#), and common time. It features a melodic line with slurs and a flat accidental (b) on the final note.

Musical staff with treble clef, key signature of one sharp (F#), and common time. It contains two measures of whole notes, each marked with a '2' above the staff, labeled 'I' and 'J' respectively. A *mf* dynamic marking is present.

Musical staff with treble clef, key signature of one sharp (F#), and common time. It features a melodic line with slurs and a flat accidental (b) on the final note.

Musical staff with treble clef, key signature of one sharp (F#), and common time. It contains two measures of whole notes, each marked with a '7' above the staff, labeled 'K' and 'L' respectively.

Musical staff with treble clef, key signature of one sharp (F#), and common time. It starts with a *ff* dynamic marking and features a melodic line with a slur and a flat accidental (b) on the final note.

Musical staff with treble clef, key signature of one sharp (F#), and common time. It features a melodic line with a slur and a flat accidental (b) on the final note, ending with a *mf* dynamic marking.

Junpei. Murayama

Fly Me to The Moon

Music by Bart Howard
Arr. by T.Utsunomiya

Medium Swing ♩ = 132



8

A *ff*

B

C *ad-lib Solo*

8 **D** 6 C Bm7 E7

E Am7 Dm7 G7 CM7 C7

F Bm7(b5) E7 Am A7

tanarazuma city academy band

F Dm7 G7 Em7(b5) A7

Dm7 G7 C Bm7 E7

G Am7 Dm7 G7 CM7 C7

F Bm7(b5) E7 Am A7

H Dm7 G7 Em7(b5) A7

Dm7 G7 C Bm7 E7 *Solo end*

I 8 **J** 8 **K**

L CM13(#11)

Solo Tenor Sax.

宝塚
アカデミー
音楽団
15

Fly Me to The Moon

Music by Bart Howard
Arr. by T. Utsunomiya

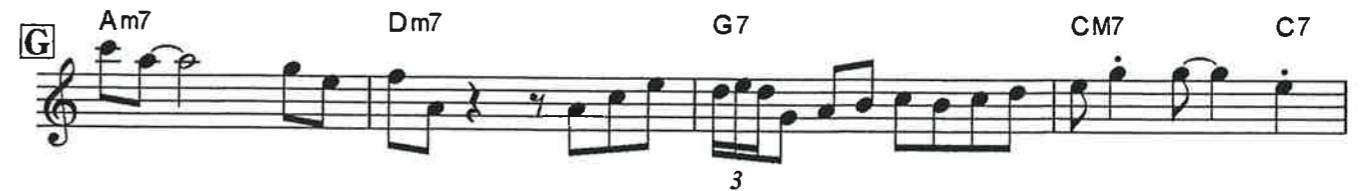
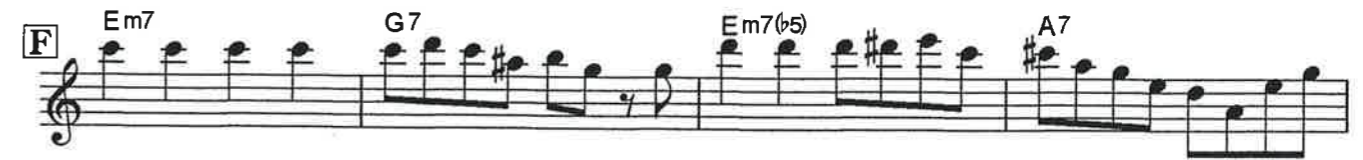
Medium Swing ♩ = 132



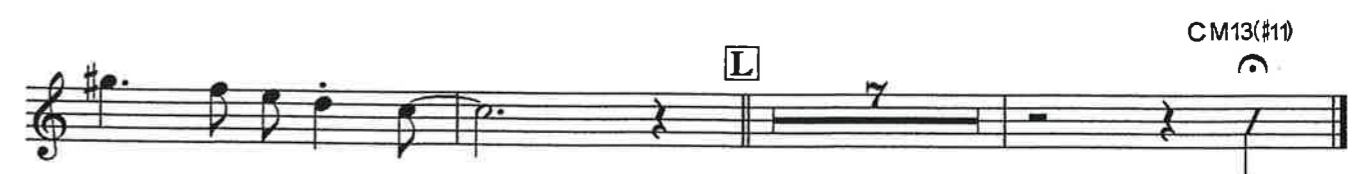
ad-lib Solo



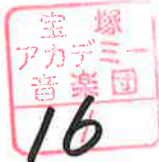
tanarazuna city academy band



Solo end



1st Tenor Sax. in B \flat



Fly Me to The Moon

Music by Bart Howard
Arr. by T. Utsunomiya

Medium Swing ♩ = 132

Musical staff with notes and dynamics: *ff*

Musical staff with notes and dynamics: *f*

Musical staff with measures 8 and 8, labeled A and B.

Musical staff with notes and dynamics: *f*

Musical staff with notes and dynamics: *ff*

Musical staff with notes and dynamics: *ff*

Musical staff with notes and dynamics: *f*

Musical staff with measures 8 and 8, labeled E and F.

Musical staff with measures 8, 7, and a triplet, labeled G and H. Dynamics: *f*

Musical staff with notes and dynamics: *f*

Musical staff with measure 2 and a dynamic marking *mf*, labeled J.

Musical staff with notes and dynamics: *f*

Musical staff with measure 7, labeled K.

Musical staff with notes and dynamics: *ff*

Musical staff with notes and dynamics: *mf*

2nd Tenor Sax. in B \flat

Fly Me to The Moon

Music by Bart Howard
Arr. by T. Utsunomiya

Medium Swing $\bullet = 132$



Musical staff with notes and dynamics. *ff*

Musical staff with notes and dynamics.

Musical staff with notes and dynamics. **A** **B**

Musical staff with notes and dynamics. **C** *f*

Musical staff with notes and dynamics. *ff*

Musical staff with notes and dynamics. **D** *ff*

Musical staff with notes and dynamics. **2**

Musical staff with notes and dynamics. **E** **F** **8**

Musical staff with notes and dynamics. **G** **H** **8** **7** **3** **3** *f*

Musical staff with notes and dynamics. **I**

Musical staff with notes and dynamics. **J** **2** *mf*

Musical staff with notes and dynamics.

Musical staff with notes and dynamics. **K** **7**

Musical staff with notes and dynamics. **L** *ff*

Musical staff with notes and dynamics. *mf*

Baritone Sax. in E^b

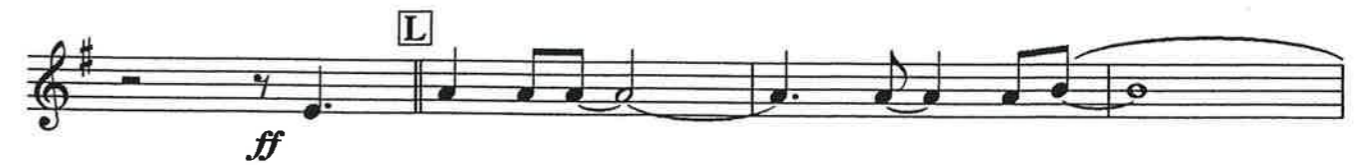
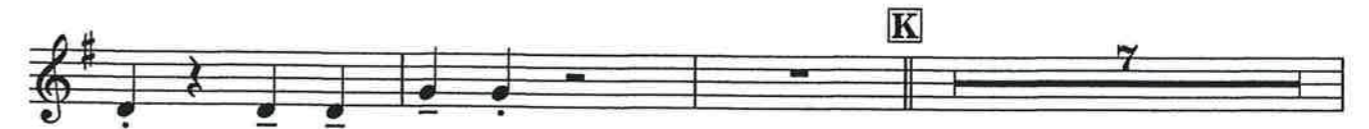
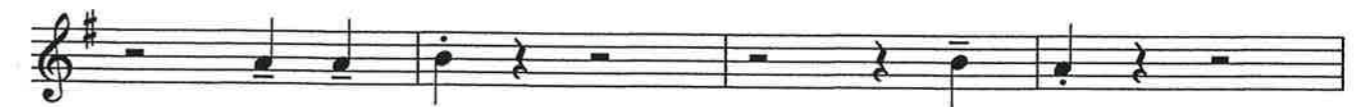
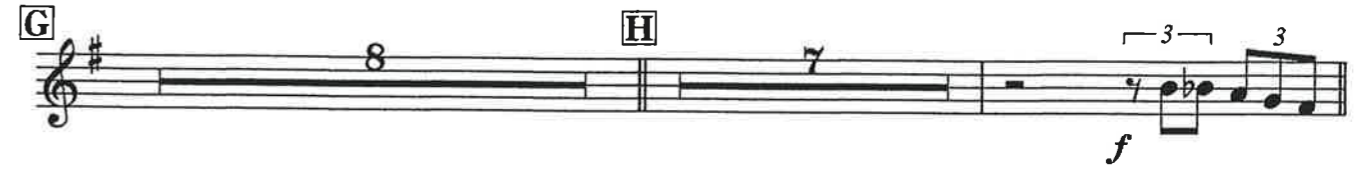
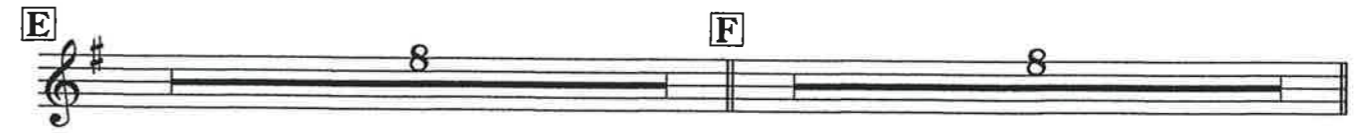
Fly Me to The Moon

Music by Bart Howard
Arr. by T. Utsunomiya

Medium Swing ♩ = 132



tanarazuna city academy band



1st Trumpet in B \flat

Fly Me to The Moon

Music by Bart Howard
Arr. by T.Utsunomiya

Medium Swing $\bullet = 132$



Musical staff with treble clef, 2-measure rest, and notes with *ff* dynamic.

Musical staff with treble clef, notes with accents and *f* dynamic.

Musical staff with treble clef, 8-measure rest (A), 7-measure rest (B), and notes with *ff* dynamic.

Musical staff with treble clef, notes with accents and *f* dynamic.

Musical staff with treble clef, 2-measure rest, notes with accents, 2-measure rest (D), and notes with *ff* dynamic.

Musical staff with treble clef, notes with accents and 2-measure rest.

takarazuka city academy band

宝塚市アカデミー音楽団

Musical staff with treble clef, 8-measure rest (E), 8-measure rest (F), and notes.

Musical staff with treble clef, 8-measure rest (G), 8-measure rest (H), and notes.

Musical staff with treble clef, notes with *f* dynamic.

Musical staff with treble clef, notes with accents and *f* dynamic.

Musical staff with treble clef, 7-measure rest (J), and notes with *ff* dynamic.

Musical staff with treble clef, 8-measure rest (K), 2-measure rest (L), and notes with *ff* dynamic.

Musical staff with treble clef, notes with accents and *mf* dynamic.

2nd Trumpet in B \flat

Fly Me to The Moon



Medium Swing ♩ = 132

Music by Bart Howard
Arr. by T. Utsunomiya

Musical staff with notes and dynamics: *ff*

Musical staff with notes and dynamics: *f*

Musical staff with measures A and B, notes, and dynamics: *ff*

Musical staff with measure C, notes, and dynamics: *f*

Musical staff with measure D, notes, and dynamics: *ff*

Musical staff with notes and dynamics: *f*

Musical staff with measure E, notes, and dynamics: *f*

Musical staff with measure G, notes, and dynamics: *f*

Musical staff with measure I, notes, and dynamics: *f*

Musical staff with notes and dynamics: *f*

Musical staff with measure J, notes, and dynamics: *ff*

Musical staff with measures K and L, notes, and dynamics: *ff*

Musical staff with notes and dynamics: *mf*

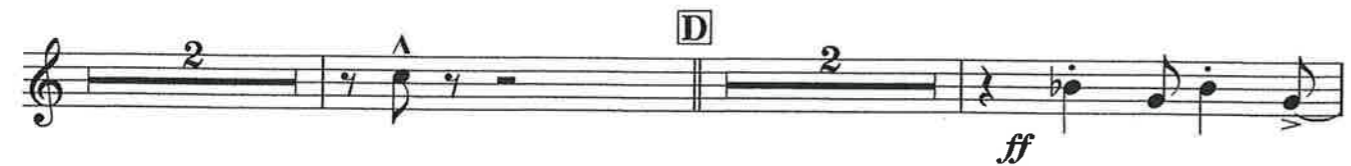
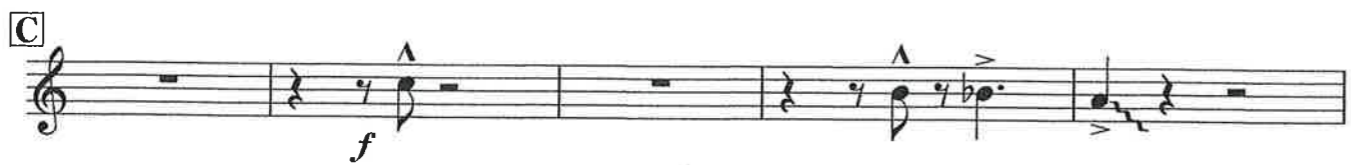
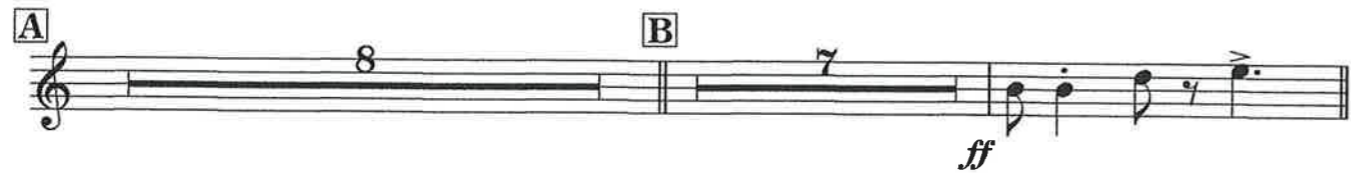
3rd Trumpet in B \flat



Fly Me to The Moon

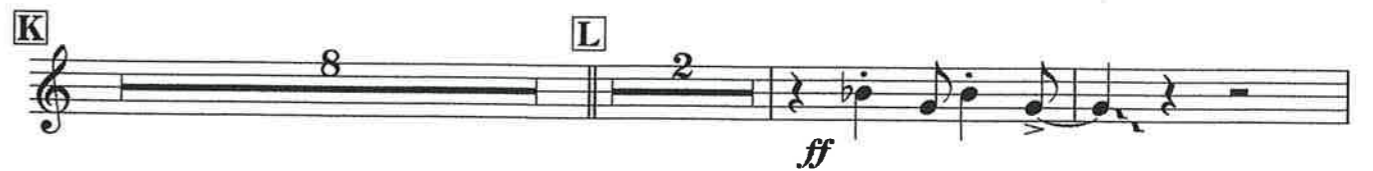
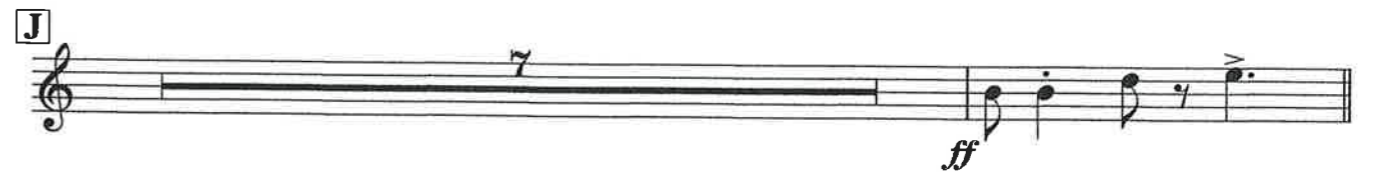
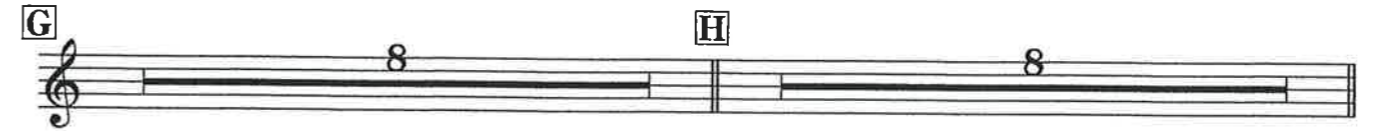
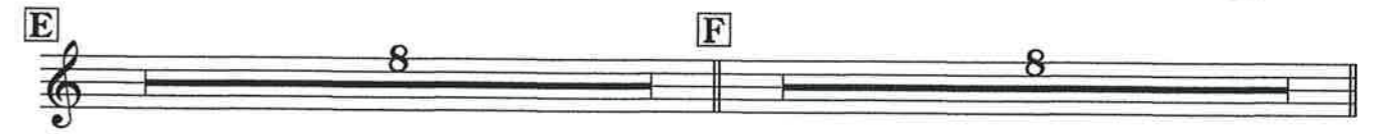
Medium Swing ♩ = 132

Music by Bart Howard
Arr. by T. Utsunomiya



takarazuka city academy band

宝塚市アカデミー音楽団



4th Trumpet in B \flat

Fly Me to The Moon

Music by Bart Howard
Arr. by T.Utsunomiya

Medium Swing $\bullet = 132$



Musical staff with treble clef, common time signature, and dynamics *ff*. Includes a first ending bracket labeled '2'.

Musical staff with treble clef, dynamics *f*, and accents (^).

Musical staff with treble clef, first ending bracket labeled 'A', second ending bracket labeled 'B', and dynamics *ff*.

Musical staff with treble clef, dynamics *f*, and accents (^).

Musical staff with treble clef, first ending bracket labeled 'D', and dynamics *ff*.

Musical staff with treble clef, dynamics *mf*, and accents (^).

Musical staff with treble clef, first ending bracket labeled 'E', second ending bracket labeled 'F', and dynamics *ff*.

Musical staff with treble clef, first ending bracket labeled 'G', second ending bracket labeled 'H', and dynamics *ff*.

Musical staff with treble clef, dynamics *f*, and accents (^).

Musical staff with treble clef, dynamics *ff*, and accents (^).

Musical staff with treble clef, first ending bracket labeled 'J', and dynamics *ff*.

Musical staff with treble clef, first ending bracket labeled 'K', second ending bracket labeled 'L', and dynamics *ff*.

Musical staff with treble clef, dynamics *mf*, and accents (^).